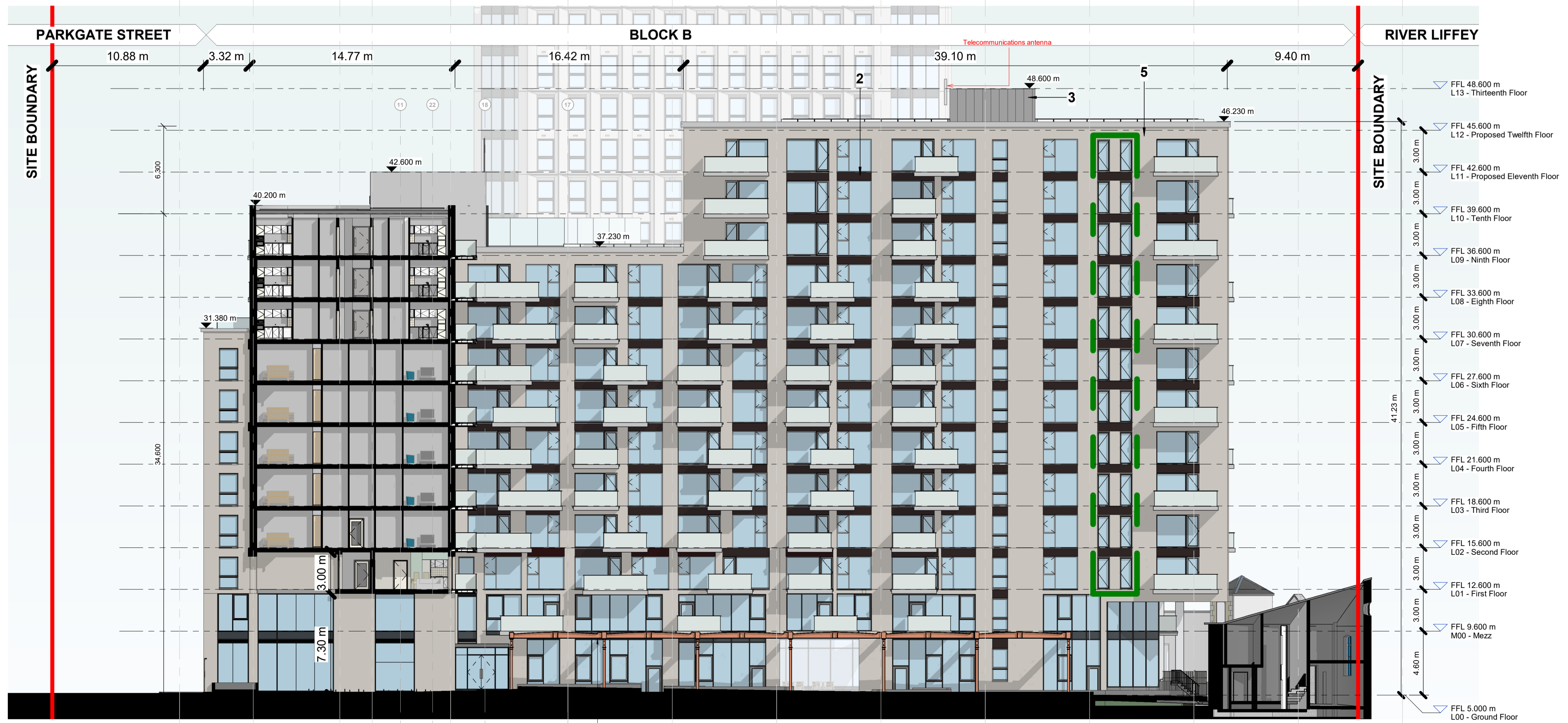




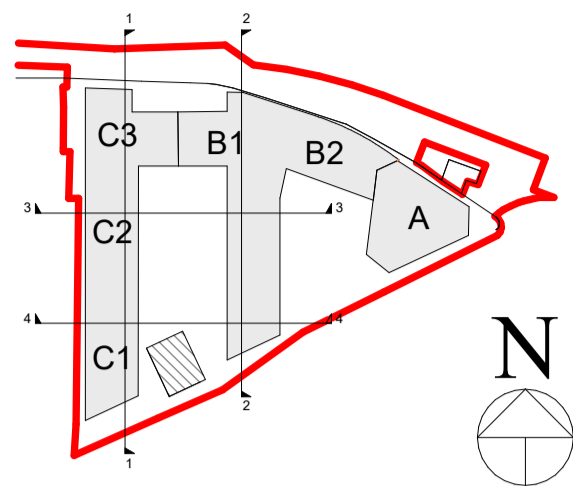
Proposed East Courtyard Elevation
1 : 200



Proposed West Courtyard Elevation
1 : 200

Notes:
 - Do not scale from this drawing. Use figured dimensions in all cases.
 - Verify dimensions on site and report any discrepancies to the Architect immediately.
 - This drawing is to be read in conjunction with the Architect's Specification.
 - © This drawing is copyright and may only be reproduced with the Architect's permission.

Drawing Notes:



AREA TO WHICH THIS APPLICATION RELATES


SITE BOUNDARY

Materials Legend

- 1 SELECTED OAT BRICK
- 2 SELECTED DARK BRICK
- 3 SELECTED METAL CLADDING
- 4 SELECTED RENDER
- 5 SELECTED LIGHT BRICK

Rev No.	Date	Drawn	Details of Issue / Revision
P01	20.03.2026	RAU	Issued for Planning
1	01/11/2024		Issued to DT for Information & Coordination

Issues & Revisions



Dartry Mills,
Dartry Road
Dublin 6,
D06 Y0E3
T: +353 (0)1 498 7000
W: www.reddyarchitecture.com
E: info@reddyarchitecture.com

Client Details:
Ruiside Developments Ltd.

Project Details:
Parkgate St.
42a Parkgate St, Dublin 8

Drawing Title:
Application 02 - Proposed East Courtyard & West Courtyard Elevation

Job No.	Sheet Size:	Scale @A1:
P24-216D	A1	1:200
Issue Date:	Drawn By:	Reviewed By:
20.03.2026	RAU	PK

Status	Purpose of Issue
S1	Planning Permission

Project - System - Spatial Zone - Level - Type - Originator - Role - Number Revision

PGS-02-SW-ZZZ-DR-RAU-AR-2004 P01