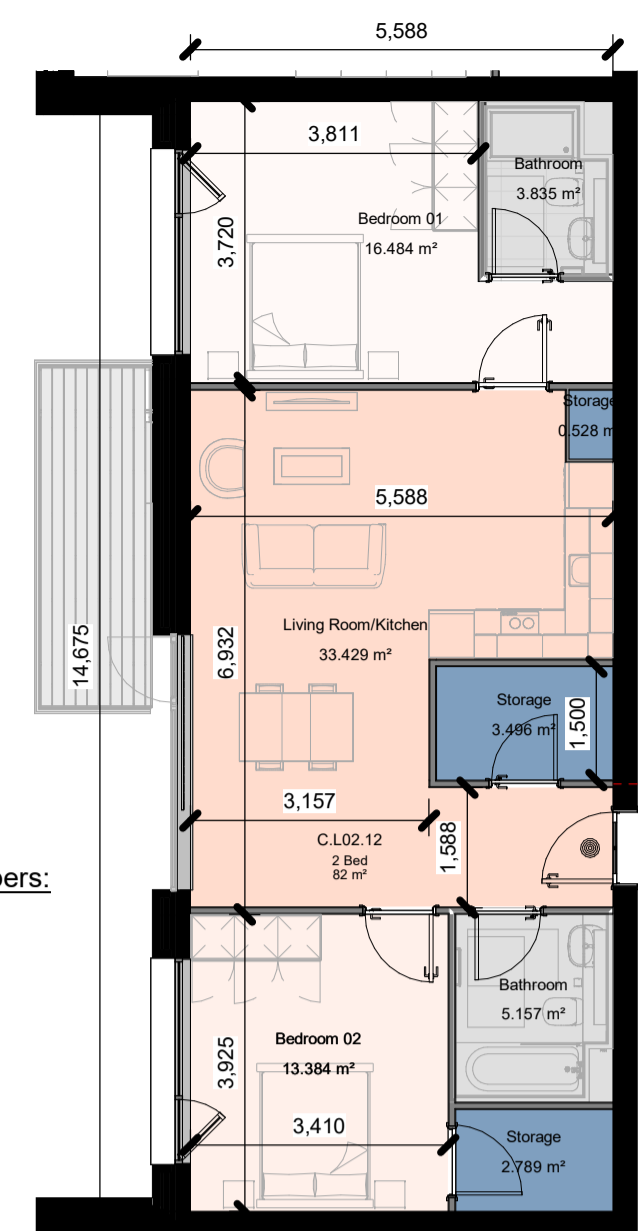


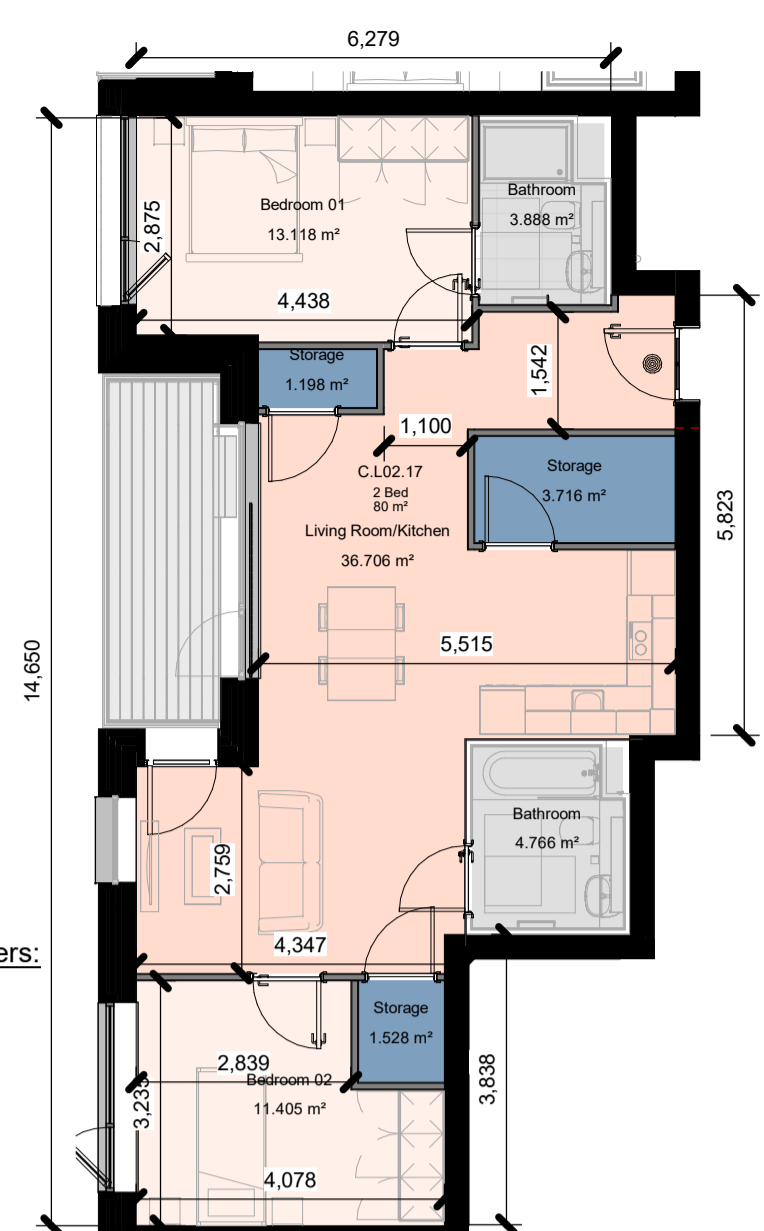
Apartment Numbers:
2 Bed (A)-(4P)
C.M00.04
C.L01.05
C.L02.06
C.L03.06
C.L04.06
C.L05.06
C.L06.06
C.L07.04
C.L08.04

Apt Type 2 Bed (A)-(4P)
1 : 100



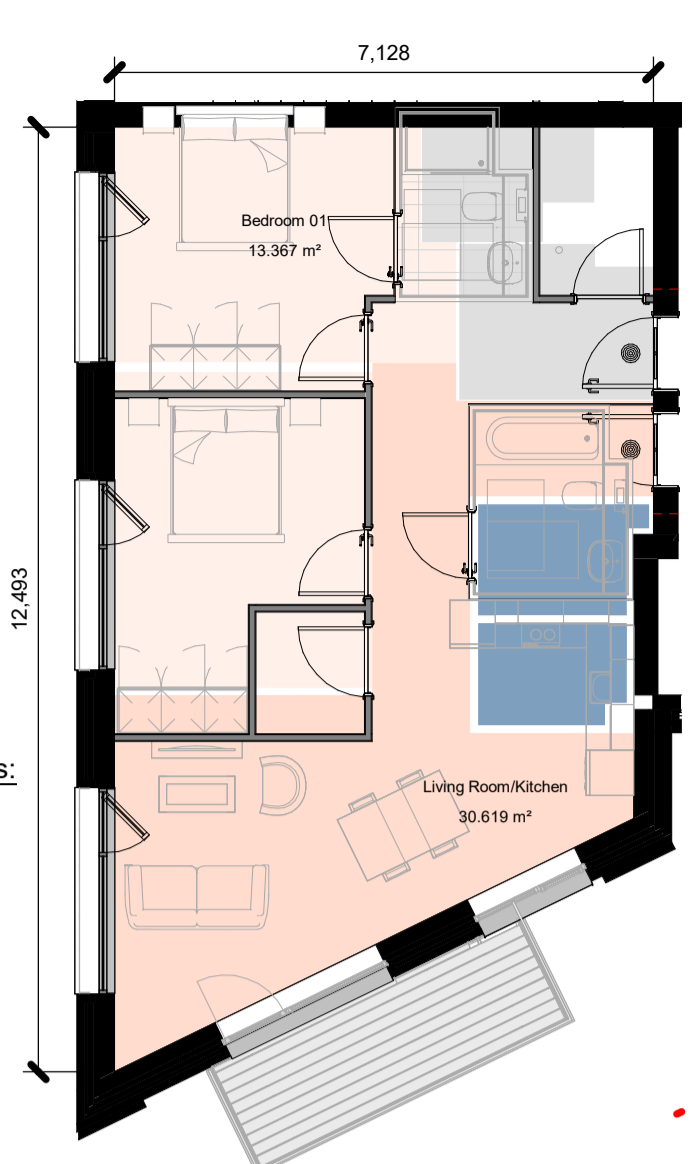
Apartment Numbers:
2 Bed (B)-(4P)
C.M00.10
C.L01.11
C.L02.12
C.L03.12
C.L04.12
C.L05.12
C.L06.12
C.L07.11

Apt Type 2 Bed (B)-(4P)
1 : 100



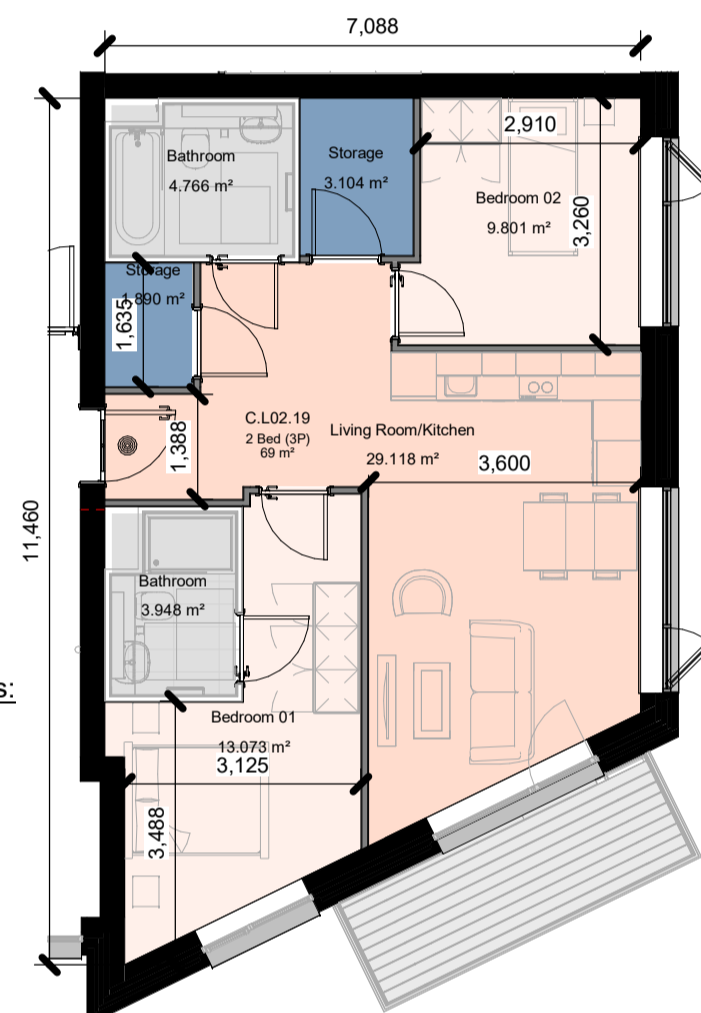
Apartment Numbers:
2 Bed (C)-(4P)
C.M00.14
C.L01.16
C.L02.17
C.L03.17
C.L04.17
C.L05.17
C.L06.17
C.L07.15

Apt Type 2 Bed (C)-(4P)
1 : 100



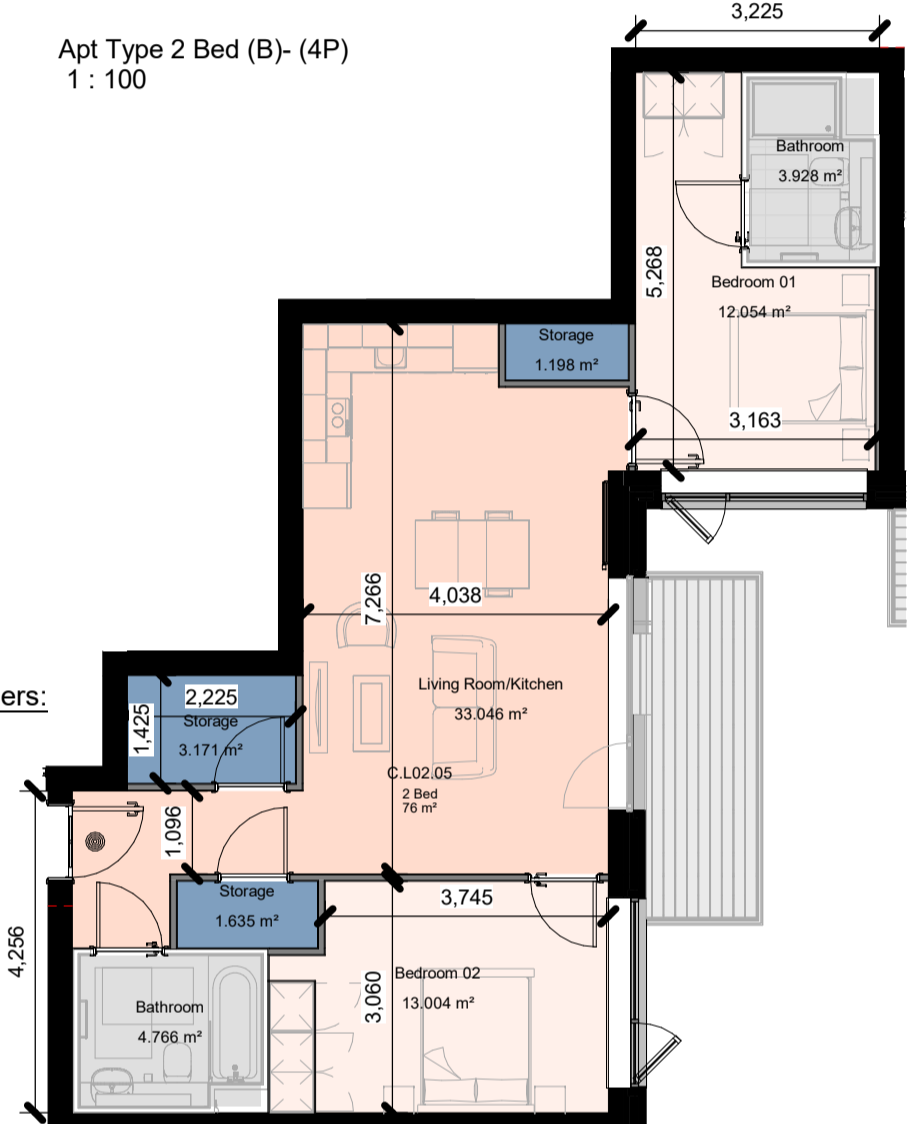
Apartment Numbers:
2 Bed (D)-(4P)
C.L00.07
C.M00.18
C.L01.19
C.L02.20
C.L03.20
C.L04.20
C.L05.20
C.L06.20
C.L07.19

Apt Type 2 Bed (D)-(4P)
1 : 100



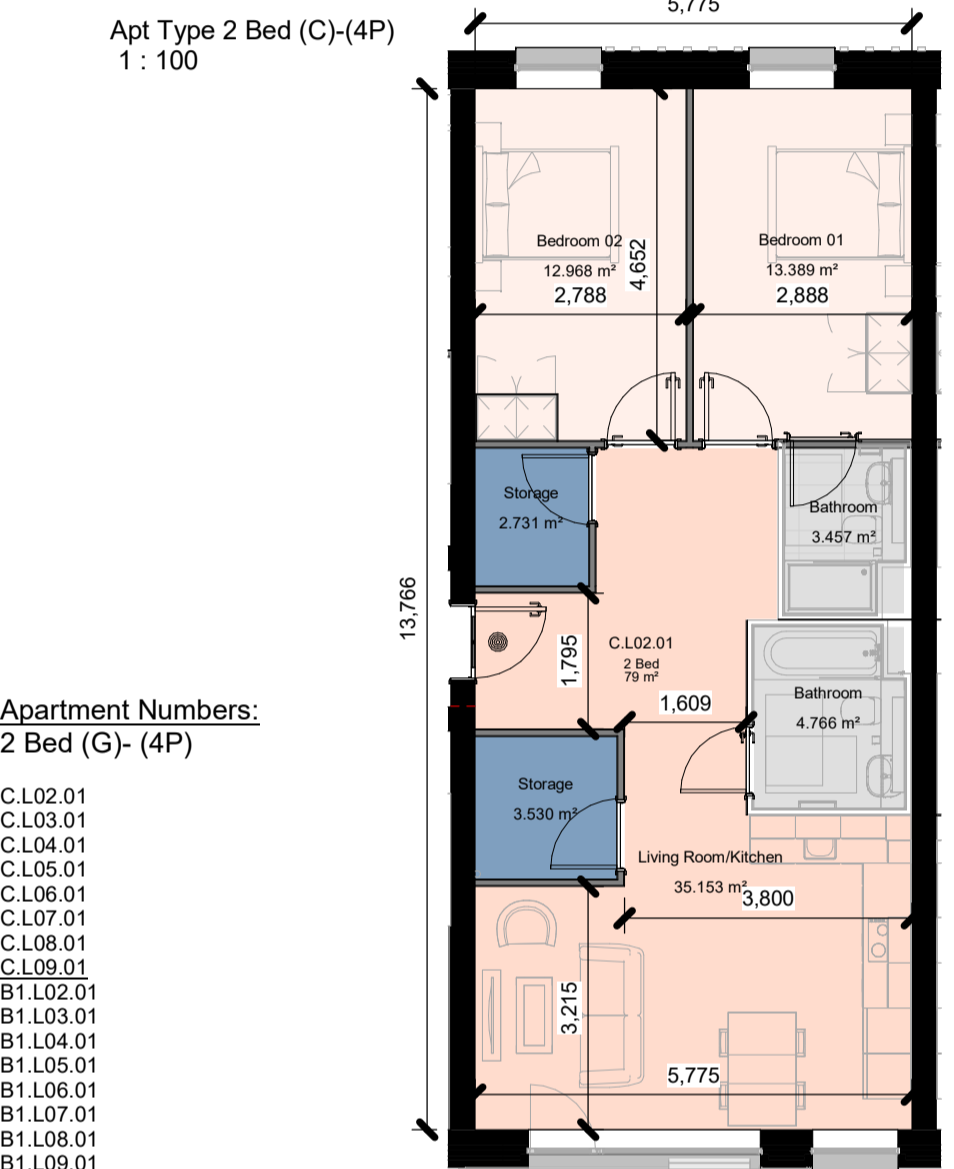
Apartment Numbers:
2 Bed (E)-(3P)
C.M00.17
C.L02.19
C.L03.19
C.L04.19
C.L05.19
C.L06.19
C.L07.18

Apt Type 2 Bed (E)-(3P)
1 : 100



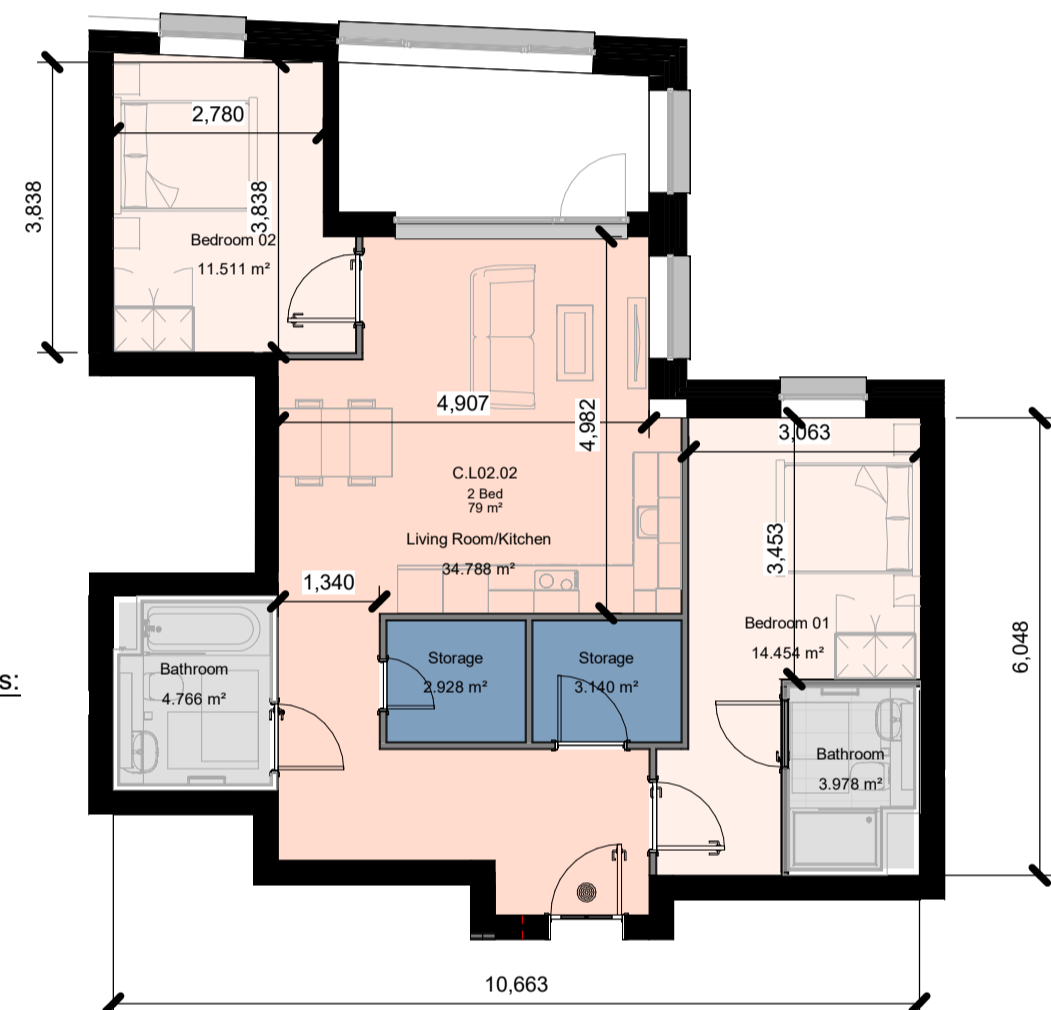
Apartment Numbers:
2 Bed (F)-(4P)
C.L02.05
C.L03.05
C.L04.05
C.L05.05
C.L06.05
C.L07.05
C.L08.05
C.L09.05
B1.L02.03
B1.L03.03
B1.L04.03
B1.L05.03
B1.L06.03
B1.L07.03
B1.L08.03

Apt Type 2 Bed (F)-(4P)
1 : 100



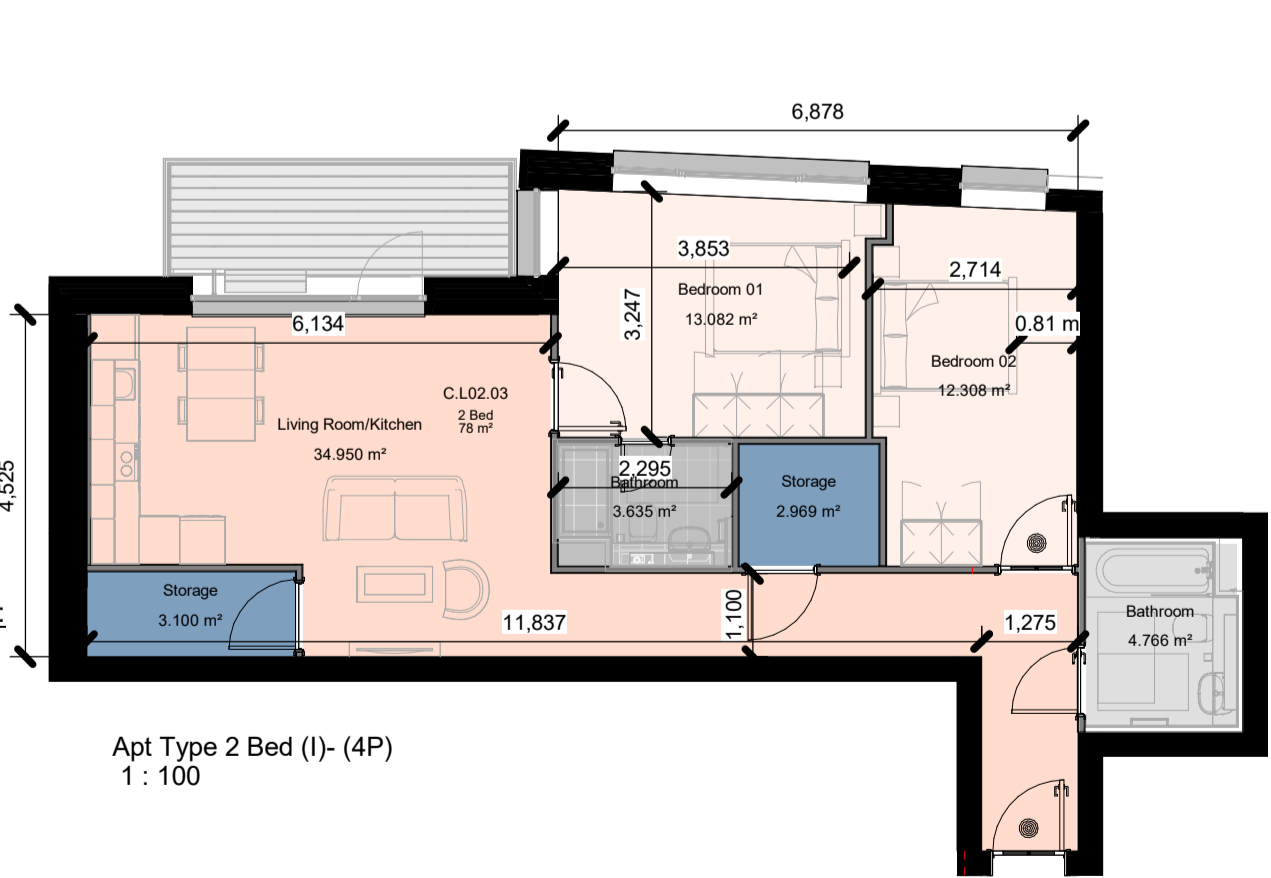
Apartment Numbers:
2 Bed (G)-(4P)
C.L02.01
C.L03.01
C.L04.01
C.L05.01
C.L06.01
C.L07.01
C.L08.01
C.L09.01
B1.L02.01
B1.L03.01
B1.L04.01
B1.L05.01
B1.L06.01
B1.L07.01
B1.L08.01
B1.L09.01

Apt Type 2 Bed (G)-(4P)
1 : 100



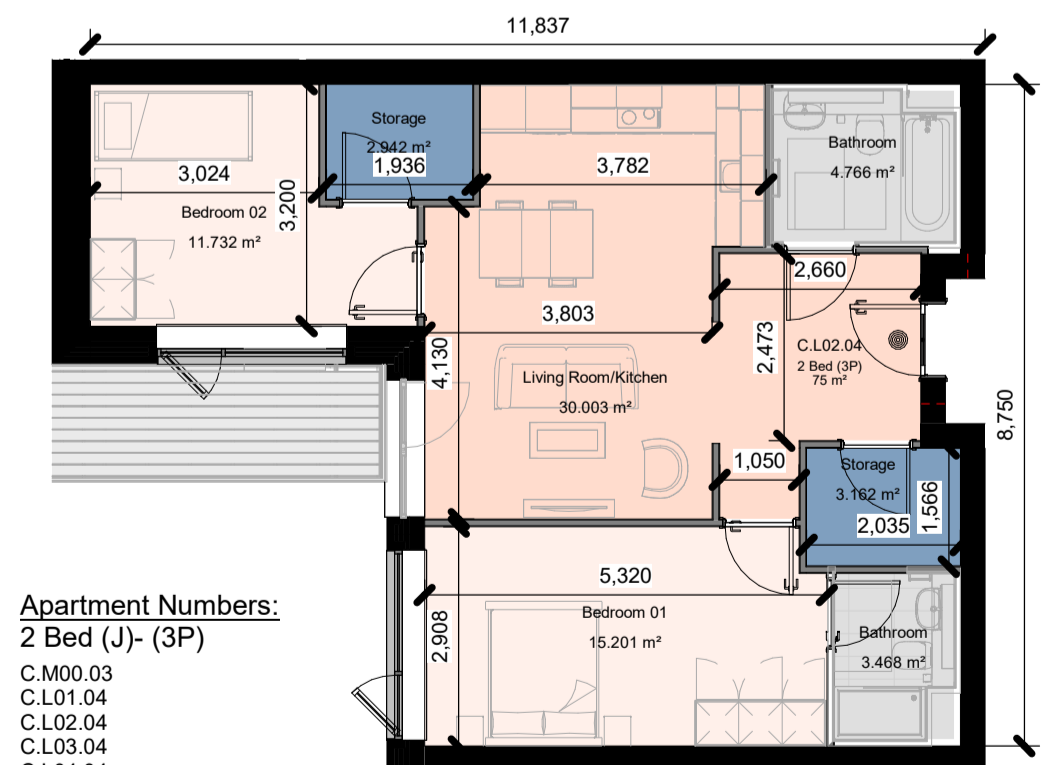
Apartment Numbers:
2 Bed (H)-(4P)
C.L02.02
C.L03.02
C.L04.02
C.L05.02
C.L06.02

Apt Type 2 Bed (H)-(4P)
1 : 100



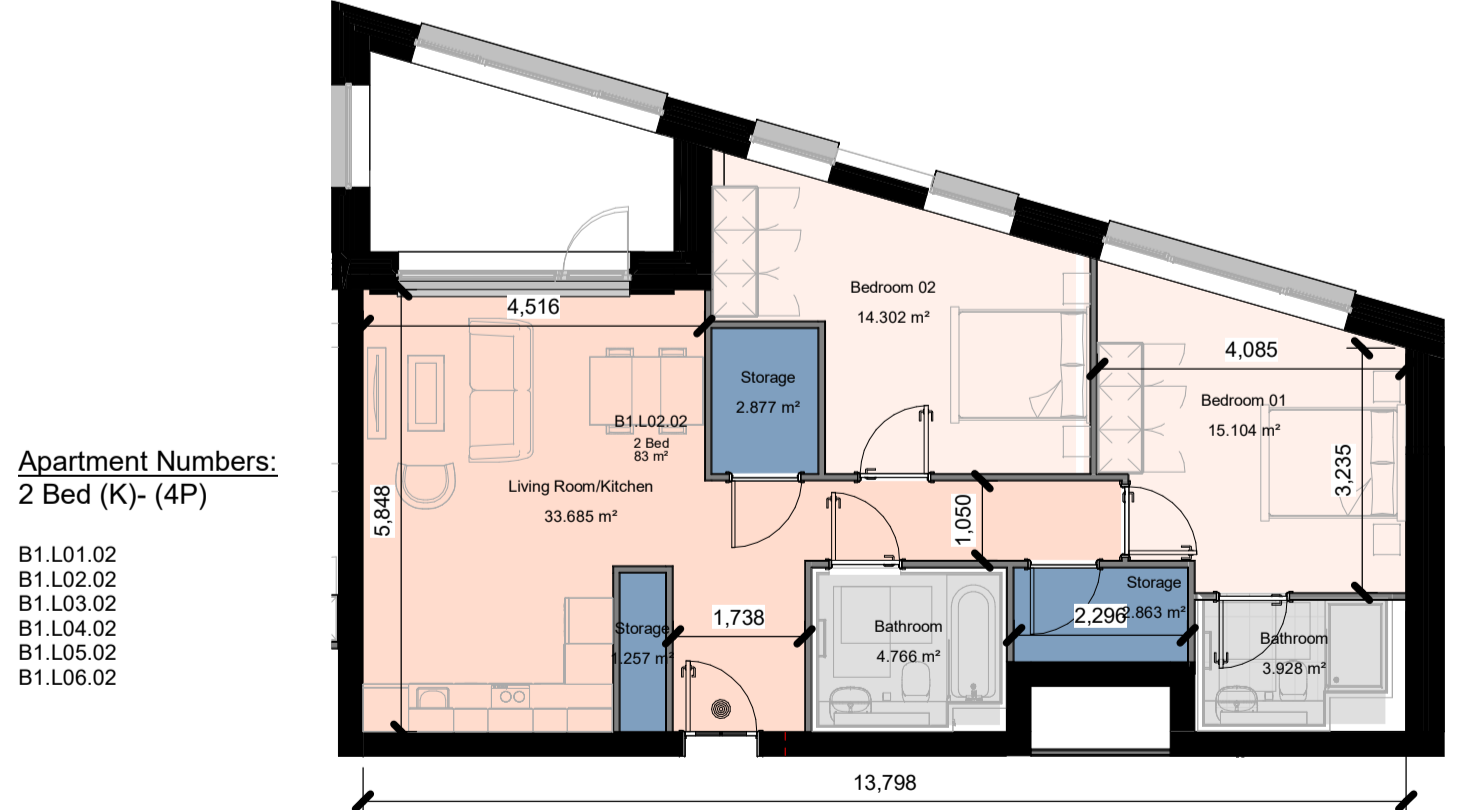
Apartment Numbers:
2 Bed (I)-(4P)
C.M00.02
C.L01.03
C.L02.03
C.L03.03
C.L04.03
C.L05.03
C.L06.03

Apt Type 2 Bed (I)-(4P)
1 : 100



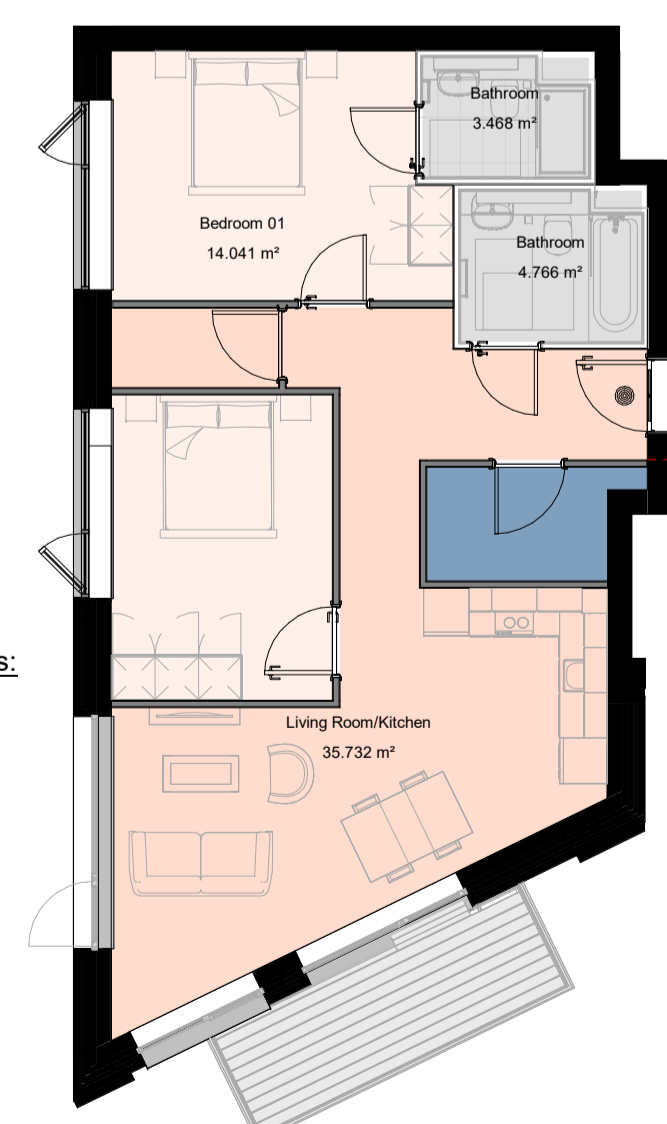
Apartment Numbers:
2 Bed (J)-(3P)
C.M00.03
C.L01.04
C.L02.04
C.L03.04
C.L04.04
C.L05.04
C.L06.04

Apt Type 2 Bed (J)-(3P)
1 : 100



Apartment Numbers:
2 Bed (K)-(4P)
B1.L01.02
B1.L02.02
B1.L03.02
B1.L04.02
B1.L05.02
B1.L06.02

Apt Type 2 Bed (K)-(4P)
1 : 100



Apartment Numbers:
2 Bed (L)-(4P)
B1.L01.12
B1.L02.13
B1.L03.13
B1.L04.13
B1.L05.13
B1.L06.13
B1.L07.13
B1.L08.13
B1.L09.08
B1.L10.06
B1.L11.06

Apt Type 2 Bed (L)-(4P)
1 : 100

Notes:
- Do not scale from this drawing. Use figured dimensions in all cases.
- Verify dimensions on site and report any discrepancies to the Architect immediately.
- This drawing is to be read in conjunction with the Architect's Specification.
- © This drawing is copyright and may only be reproduced with the Architect's permission.

Drawing Notes:

REISSUED AS PART OF COMBINED DRAWING SET - NO DRAWING CHANGES

Refer to Floor Plan Drawings for FFLs of Apartments

Rev No.	Date	Drawn	Details of Issue / Revision
P01	20.03.2026	RAU	Issued For Planning

Dartry Mills,
Dartry Road
Dublin 6,
D06 Y0E3
T: +353 (0)1 498 7000
W: www.reddyarchitecture.com
E: info@reddyarchitecture.com

Client Details:
Ruirside Developments Ltd.

Project Details:
**Parkgate St.
42a Parkgate St, Dublin 8**

Drawing Title:
Permitted - Apartment Types - Sheet 01

Job No. P24-216D	Sheet Size A1	Scale @A1: 1:100
Issue Date: 20.03.2026	Drawn By: RAU	Reviewed By: PK

Status: P3-S	Purpose of Issue: Planning Permission
Project - System - Spatial Zone - Level - Type - Originator - Role - Number	
PGS-02-SW-ZZZ-DR-RAU-AR-5010	
Revision: P01	