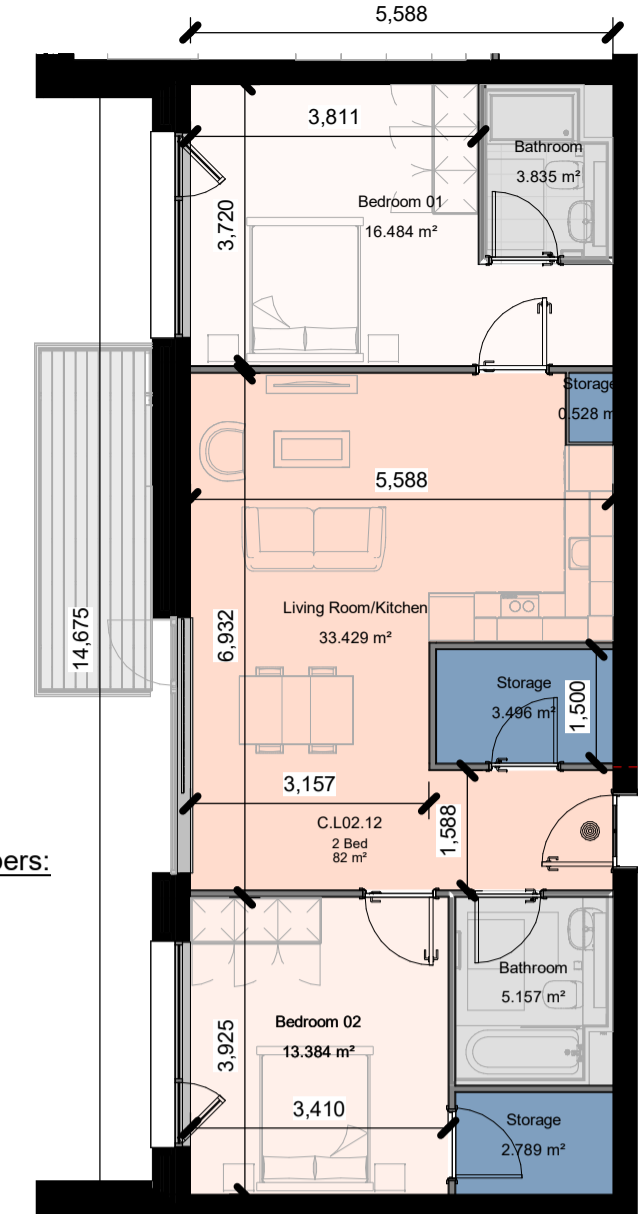




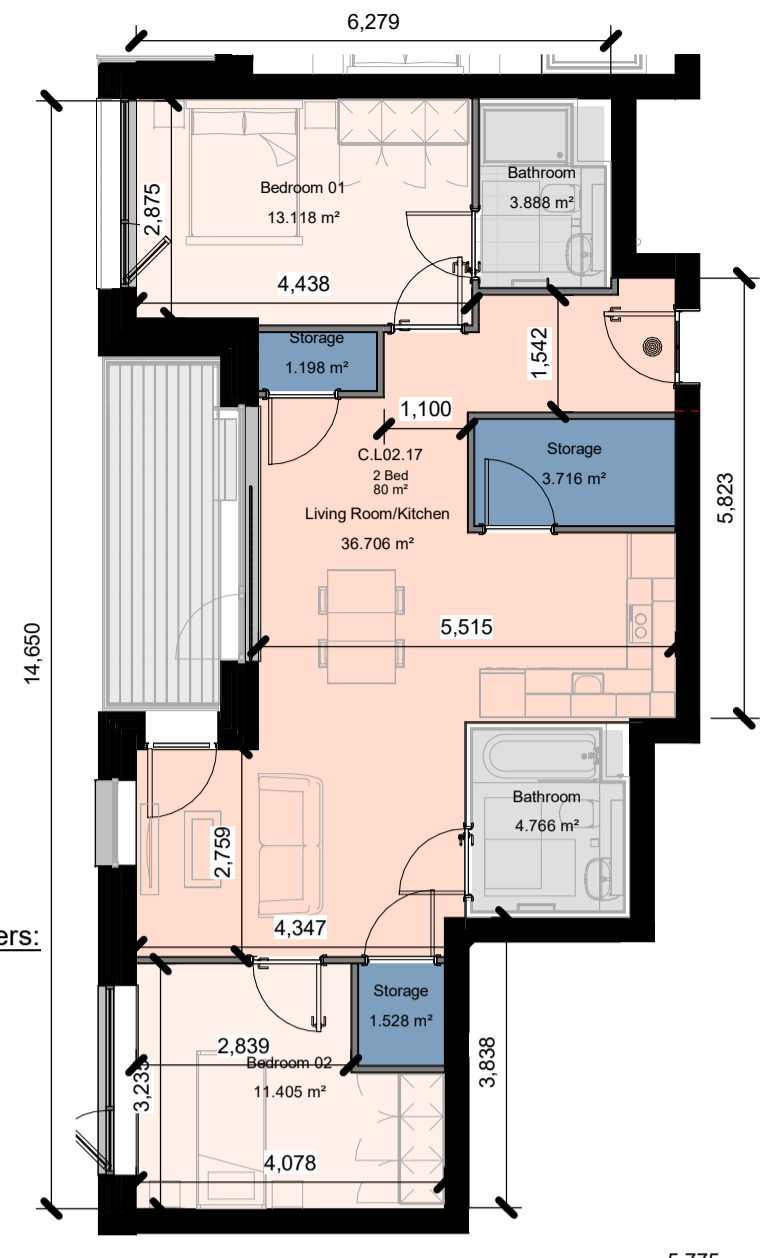
**Apt Type 2 Bed (A)-(4P)**  
1 : 100

- Apartment Numbers:**  
2 Bed (A)-(4P)
- C.M00.04
  - C.L01.05
  - C.L02.06
  - C.L03.06
  - C.L04.06
  - C.L05.06
  - C.L06.06
  - C.L07.04
  - C.L08.04



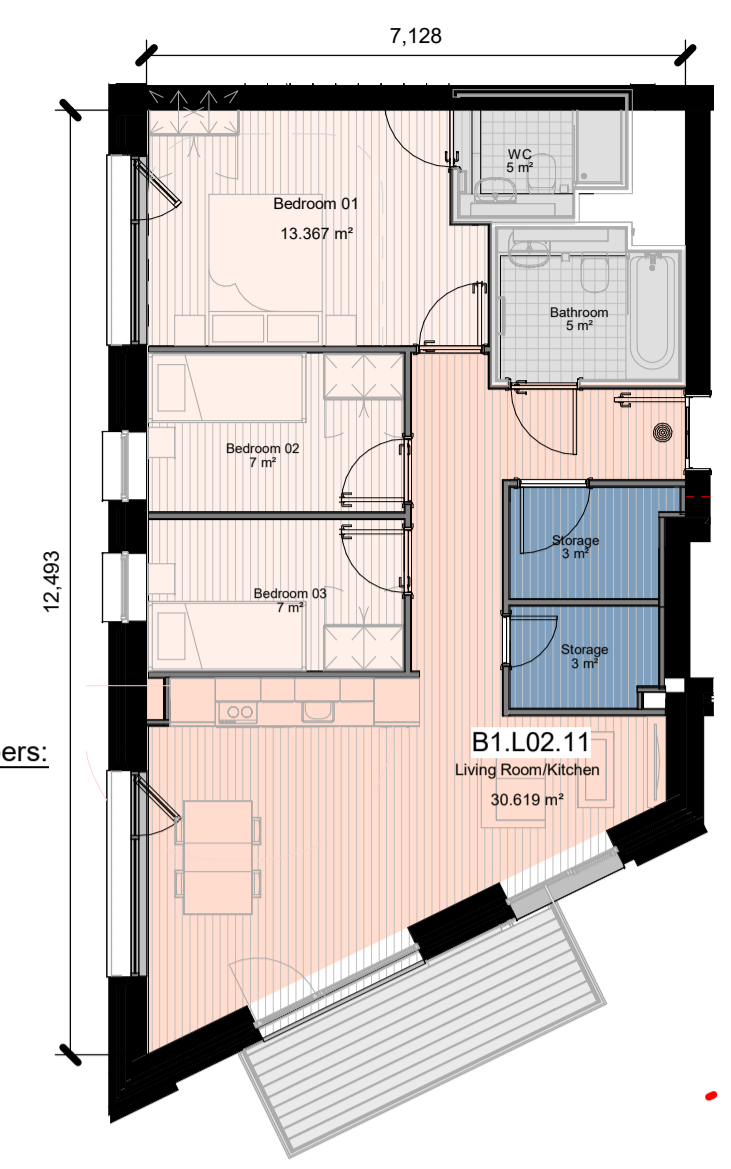
**Apt Type 2 Bed (B)-(4P)**  
1 : 100

- Apartment Numbers:**  
2 Bed (B)-(4P)
- C.M00.10
  - C.L01.11
  - C.L02.12
  - C.L03.12
  - C.L04.12
  - C.L05.12
  - C.L06.12
  - C.L07.11



**Apt Type 2 Bed (C)-(4P)**  
1 : 100

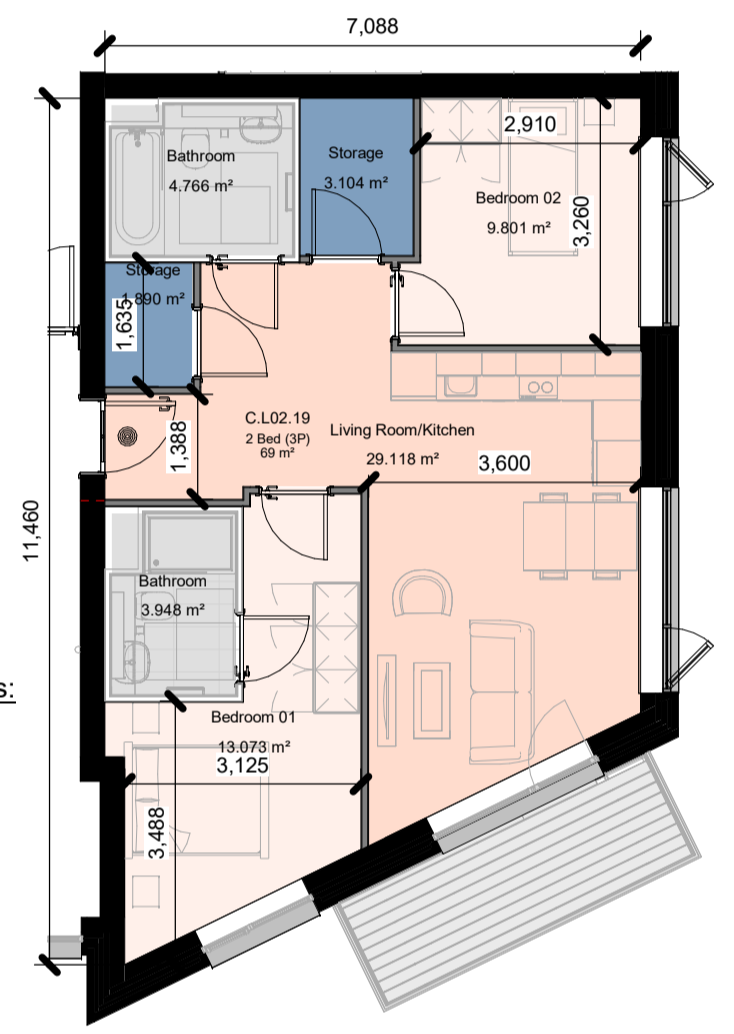
- Apartment Numbers:**  
2 Bed (C)-(4P)
- C.M00.14
  - C.L01.16
  - C.L02.17
  - C.L03.17
  - C.L04.17
  - C.L05.17
  - C.L06.17
  - C.L07.15



**Apt Type 2 Bed (D)-(4P)**  
1 : 100

- Apartment Numbers:**  
2 Bed (D)-(4P)
- C.L00.07
  - C.M00.18
  - C.L01.19
  - C.L02.20
  - C.L03.20
  - C.L04.20
  - C.L05.20
  - C.L06.20
  - C.L07.19

Approved Apartment Types – For Reference  
(No Changes Proposed)



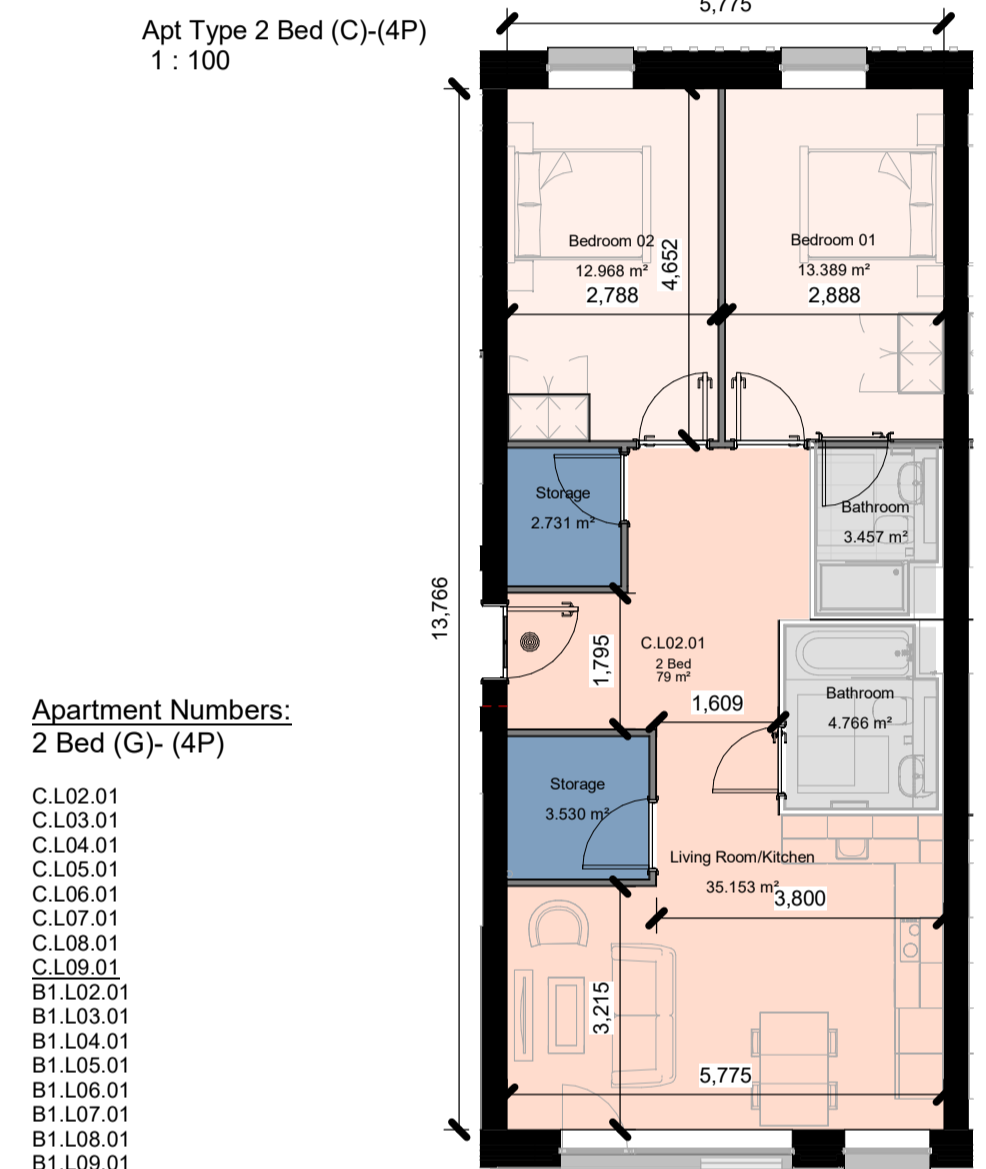
**Apt Type 2 Bed (E)-(3P)**  
1 : 100

- Apartment Numbers:**  
2 Bed (E)-(3P)
- C.M00.17
  - C.L02.19
  - C.L03.19
  - C.L04.19
  - C.L05.19
  - C.L06.19
  - C.L07.18



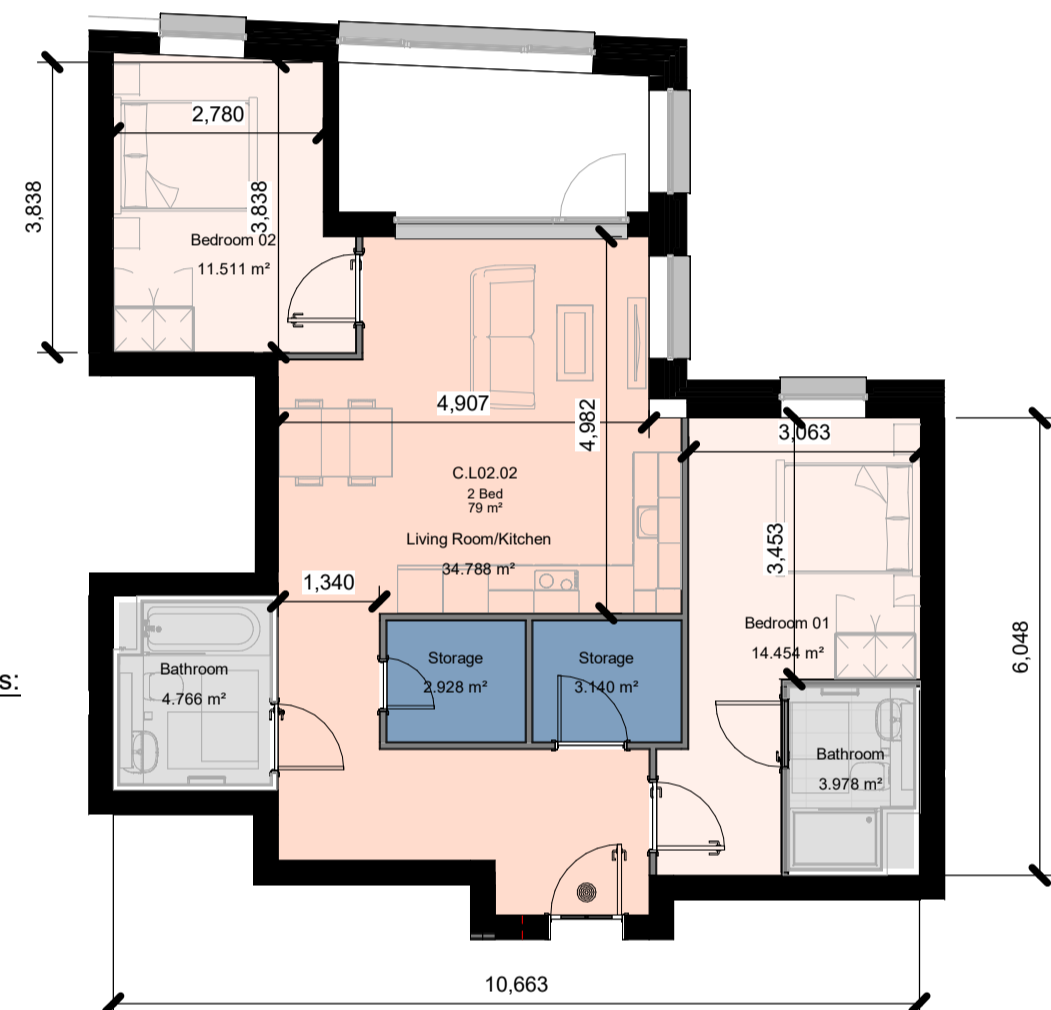
**Apt Type 2 Bed (F)-(4P)**  
1 : 100

- Apartment Numbers:**  
2 Bed (F)-(4P)
- C.L02.05
  - C.L03.05
  - C.L04.05
  - C.L05.05
  - C.L06.05
  - C.L07.05
  - C.L08.05
  - C.L09.05
  - B1.L02.03
  - B1.L03.03
  - B1.L04.03
  - B1.L05.03
  - B1.L06.03
  - B1.L07.03
  - B1.L08.03



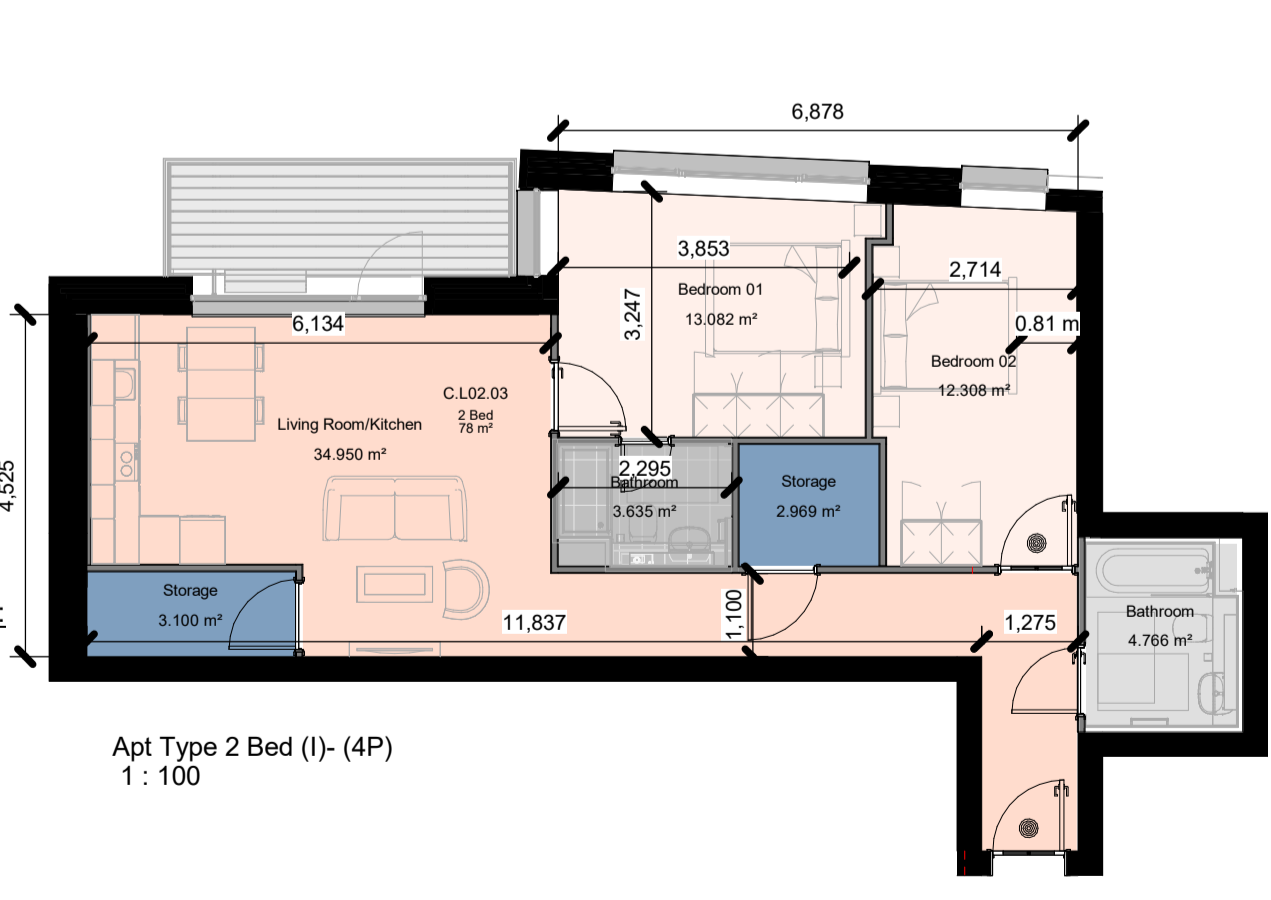
**Apt Type 2 Bed (G)-(4P)**  
1 : 100

- Apartment Numbers:**  
2 Bed (G)-(4P)
- C.L02.01
  - C.L03.01
  - C.L04.01
  - C.L05.01
  - C.L06.01
  - C.L07.01
  - C.L08.01
  - C.L09.01
  - B1.L02.01
  - B1.L03.01
  - B1.L04.01
  - B1.L05.01
  - B1.L06.01
  - B1.L07.01
  - B1.L08.01
  - B1.L09.01



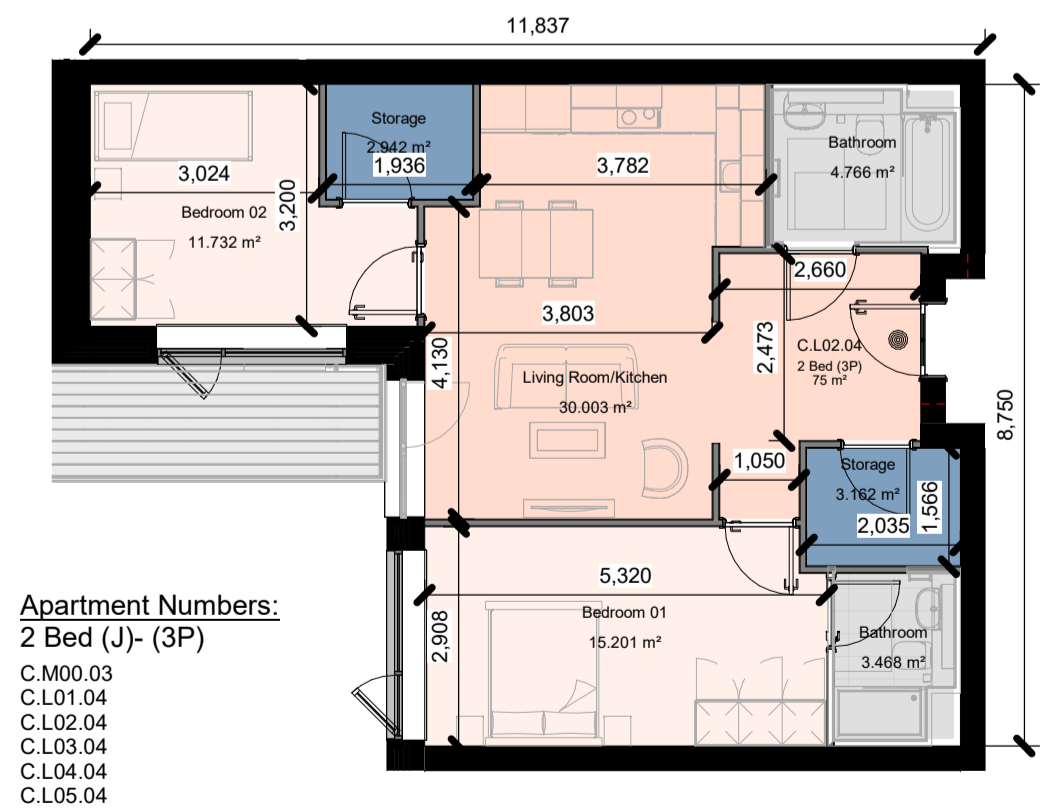
**Apt Type 2 Bed (H)-(4P)**  
1 : 100

- Apartment Numbers:**  
2 Bed (H)-(4P)
- C.L02.02
  - C.L03.02
  - C.L04.02
  - C.L05.02
  - C.L06.02



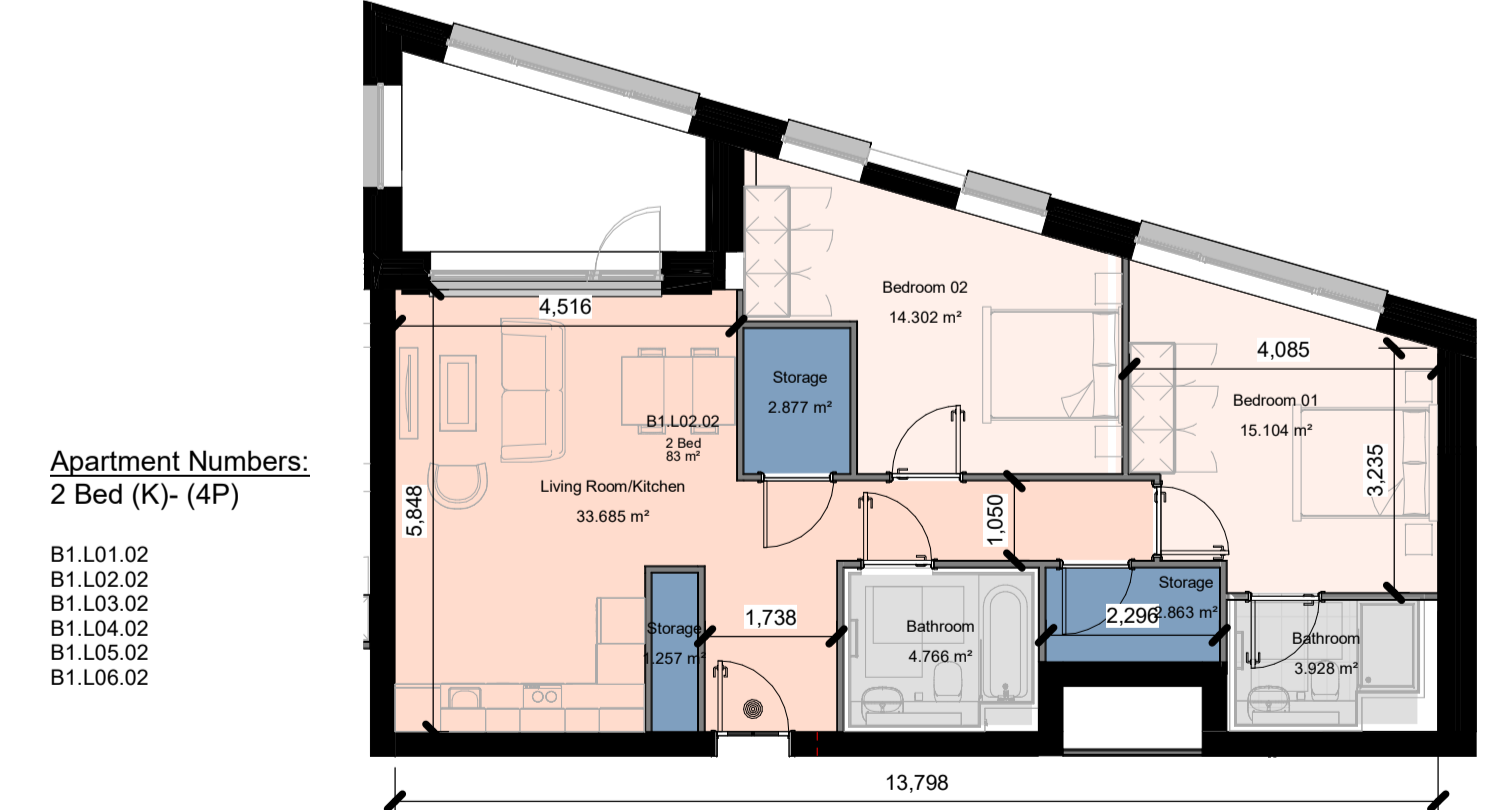
**Apt Type 2 Bed (I)-(4P)**  
1 : 100

- Apartment Numbers:**  
2 Bed (I)-(4P)
- C.M00.02
  - C.L01.03
  - C.L02.03
  - C.L03.03
  - C.L04.03
  - C.L05.03
  - C.L06.03



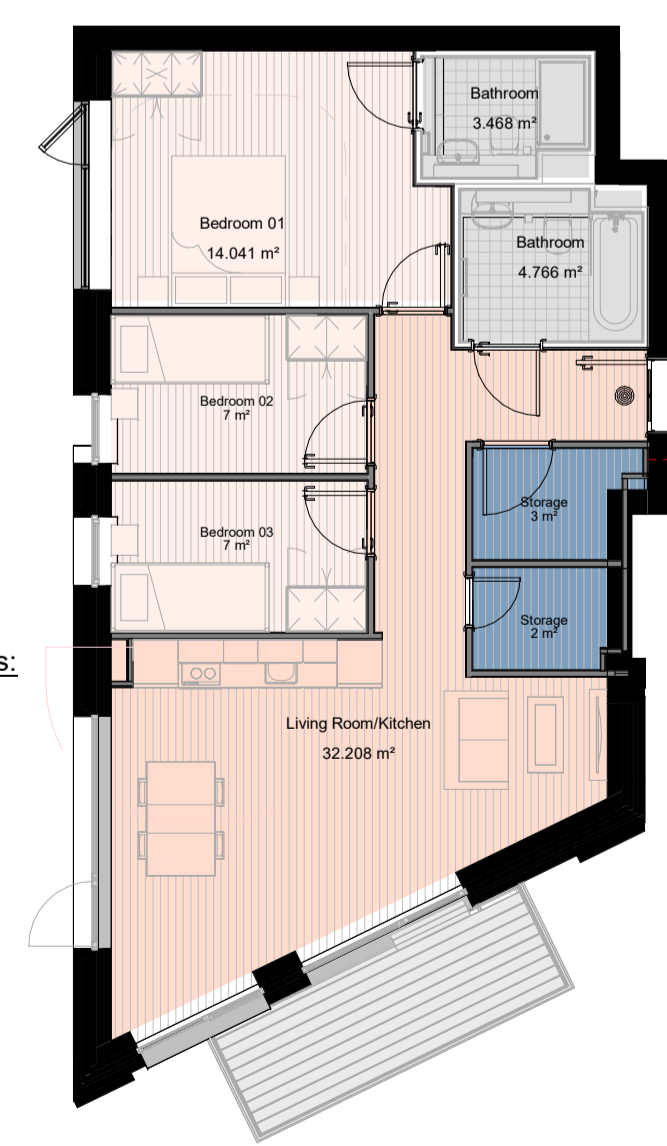
**Apt Type 2 Bed (J)-(3P)**  
1 : 100

- Apartment Numbers:**  
2 Bed (J)-(3P)
- C.M00.03
  - C.L01.04
  - C.L02.04
  - C.L03.04
  - C.L04.04
  - C.L05.04
  - C.L06.04



**Apt Type 2 Bed (K)-(4P)**  
1 : 100

- Apartment Numbers:**  
2 Bed (K)-(4P)
- B1.L01.02
  - B1.L02.02
  - B1.L03.02
  - B1.L04.02
  - B1.L05.02
  - B1.L06.02



**Apt Type 2 Bed (L)-(4P)**  
1 : 100

- Apartment Numbers:**  
2 Bed (L)-(4P)
- B1.L01.12
  - B1.L02.13
  - B1.L03.13
  - B1.L04.13
  - B1.L05.13
  - B1.L06.13
  - B1.L07.13
  - B1.L08.13
  - B1.L09.08
  - B1.L10.06
  - B1.L11.06

**Notes:**  
- Do not scale from this drawing. Use figured dimensions in all cases.  
- Verify dimensions on site and report any discrepancies to the Architect immediately.  
- This drawing is to be read in conjunction with the Architect's Specification.  
- © This drawing is copyright and may only be reproduced with the Architect's permission.

**Drawing Notes:**

Rev No.	Date	Drawn	Details of Issue / Revision
P01	20.03.2026	RAU	Issued for Planning

**Issues & Revisions**

**Client Details:**  
Ruirside Developments Ltd.

**Project Details:**  
Parkgate St.  
42a Parkgate St, Dublin 8

**reddyQ+U**  
Dartry Mills,  
Dartry Road  
Dublin 6,  
D06 Y0E3  
T: +353 (0)1 498 7000  
W: www.reddyarchitecture.com  
E: info@reddyarchitecture.com

**Drawing Title:**  
Application 02 - Apartment Types - Sheet 01  
(Approved Apartment Types – For Reference (No Changes Proposed))

Job No.	Sheet Size	Scale @A1:
P24-216D	A1	1:100

Issue Date:	Drawn By:	Reviewed By:
20.03.2026	RAU	PK

**Status:** Purpose of Issue  
P3-S Planning Permission

Project - System - Spatial Zone - Level - Type - Originator - Role - Number	Revision
PGS-02-SW-ZZZ-DR-RAU-AR-5014	P01